

HOW THE PAT-TRAP® AUTOMATIC DOUBLES MACHINE WORKS

Turn on the pump and the trap machine. The elevator rises to receive a target while the throw arm and turret advance. When a target is loaded, the elevator goes down and the throw arm advances the target until the Activator comes to the #2 and #3 switch bracket. The throw arm is now at the brake (in the cocked position) and the target is set. See Diagram 32

When the trap release switch is activated, Switch #1 overrides Switch #2 which then advances the throw arm off the throw arm brake causing the machine to fire. See Diagrams 9 and 27

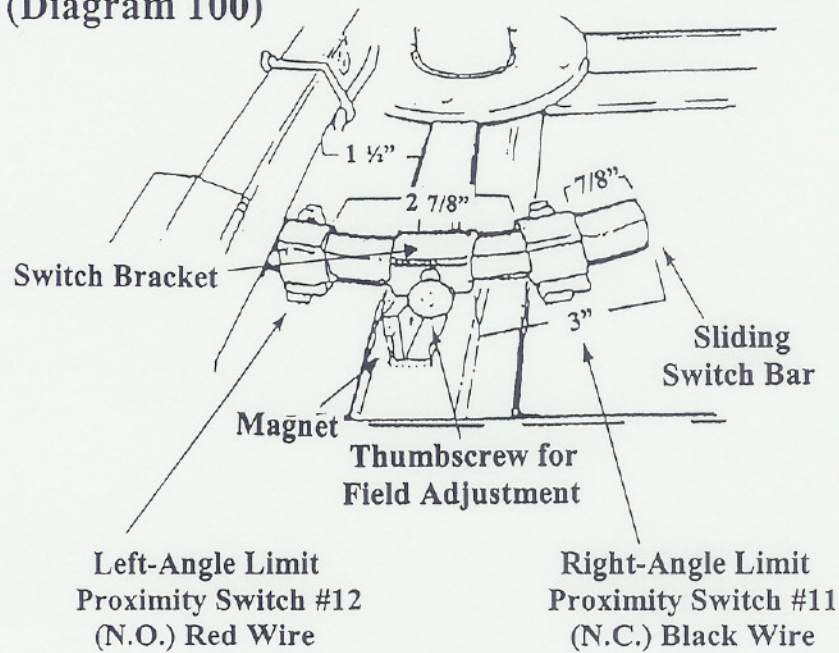
When the activator leaves Switches #2 and #3, the #2 switch closes and begins a new cycle of loading a target. The #3 switch also closes, which starts the oscillation interrupter for a pre-determined length of time*

* The machine oscillates to the left until Switch #12 comes to the magnet, activating Relay #2, causing the machine to change direction to the right. Switch #11 holds the Relay engaged until Switch #11 comes to the magnet, breaking the circuit which then disengages Relay #2 causing the machine to oscillate left. See Diagrams 25 and 100. The switching sequence is the *same for the wobble machine*. See Diagrams 51 and 52

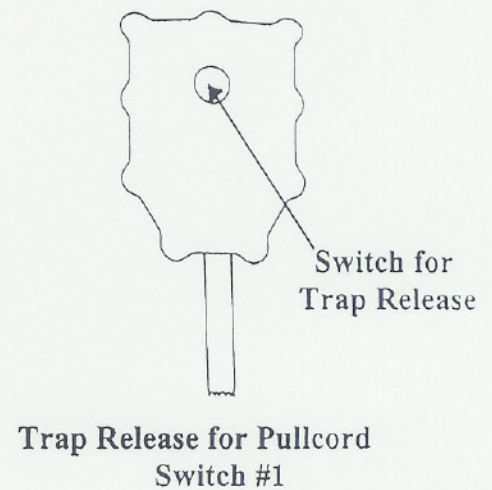
Switch #1	Trap release switch
Switch #2	Throw arm limit switch
Switch #3	Oscillation interrupter activator switch
Switch #11	Right-angle limit switch
Switch #12	Left-angle limit switch
Switch #11A	High-angle limit switch
Switch #12A	Low-angle limit switch

**Field-Angle Adjustment
Up to Serial # 2739**

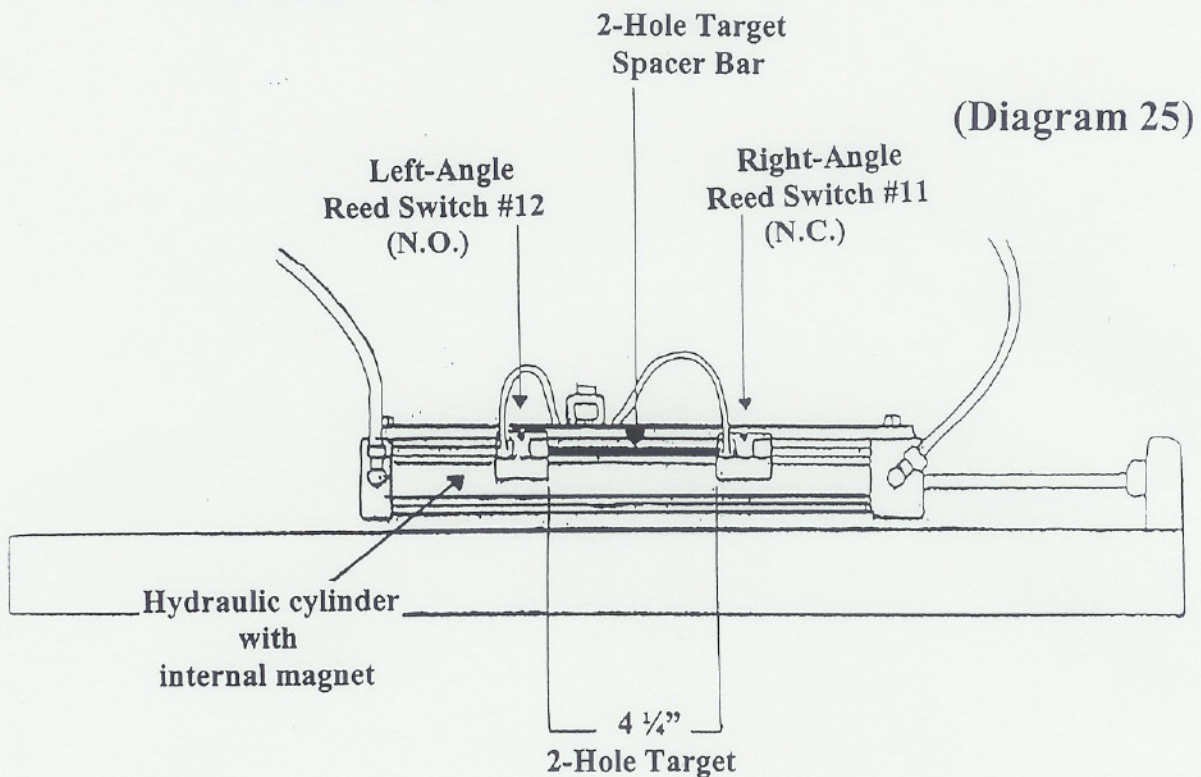
(Diagram 100)



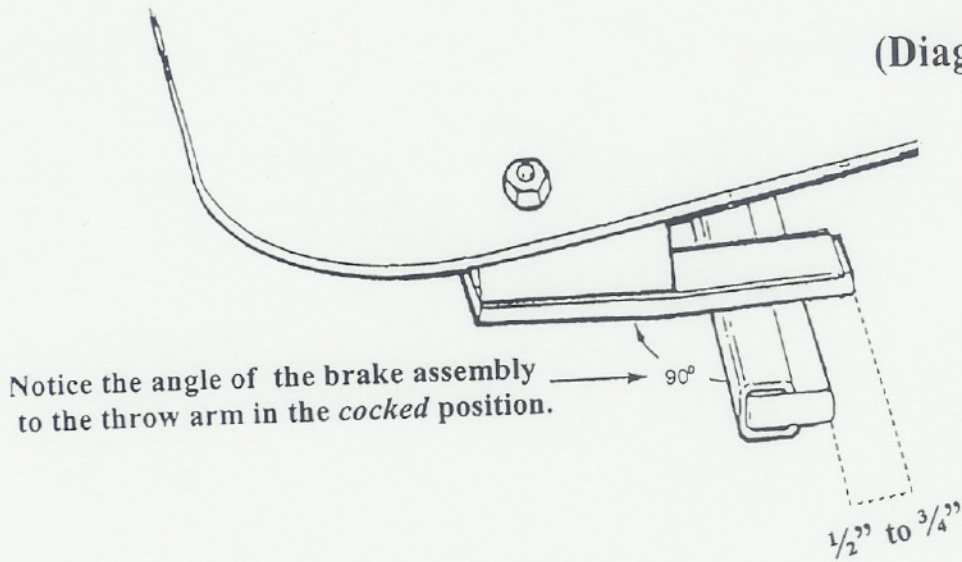
(Diagram 9)



**Field-Angle Adjustment
From Serial # 2740 ...**

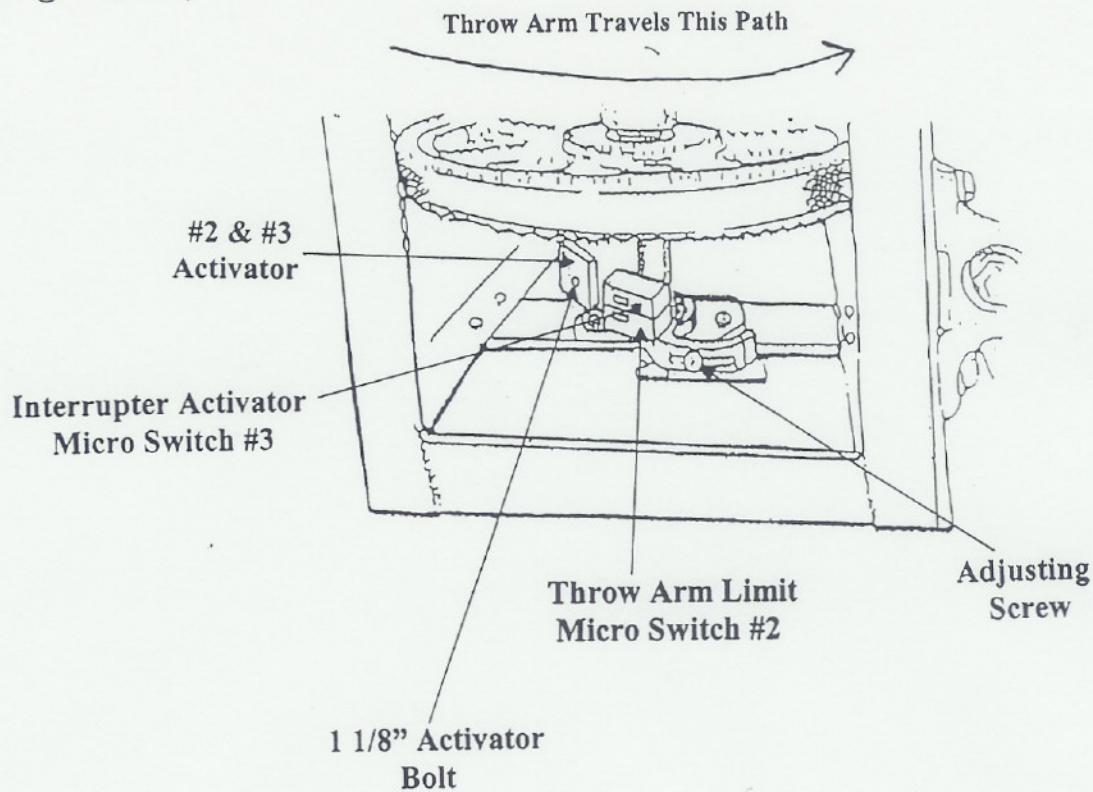


(Diagram 32)

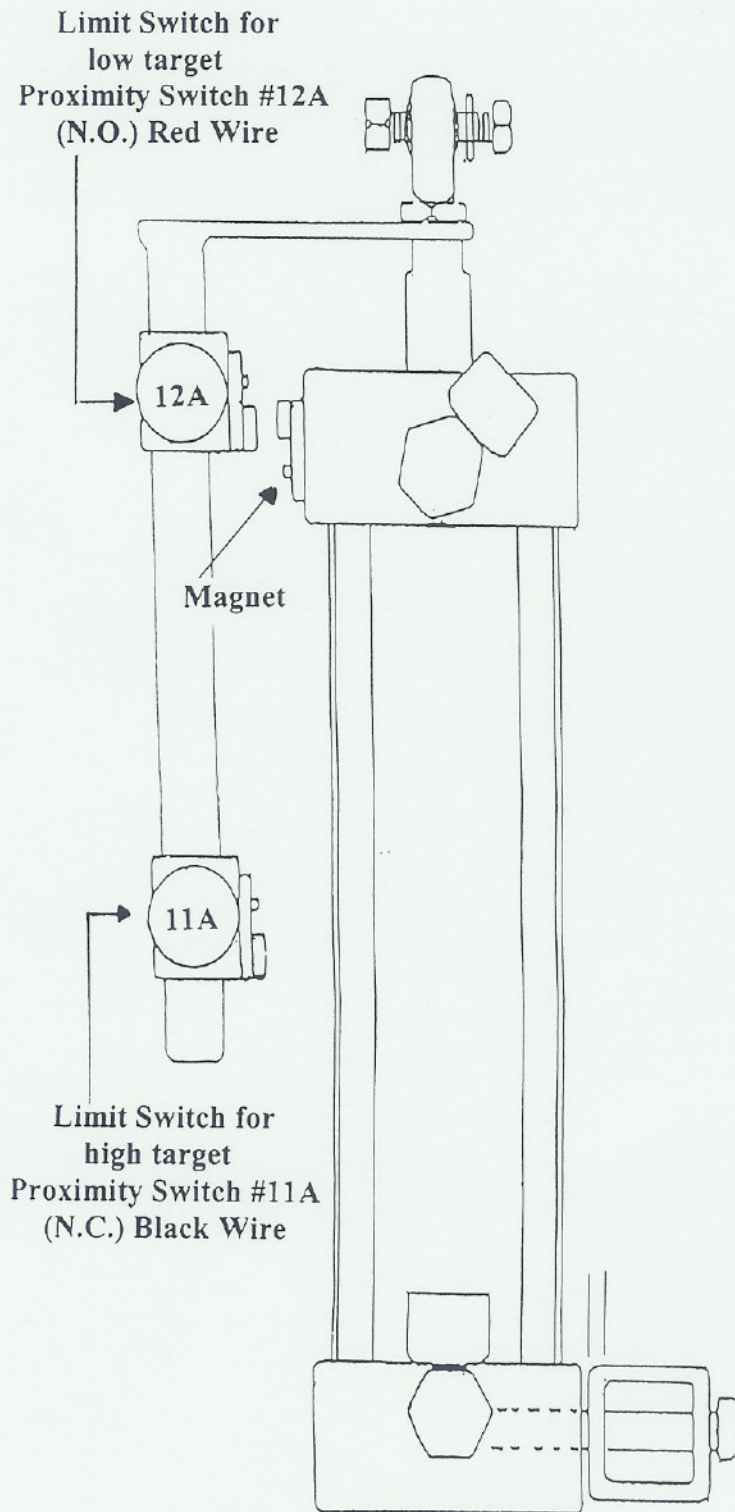


The stopping position of the throw arm on the brake is approximately $\frac{1}{2}''$ to $\frac{3}{4}''$ behind the end of the brake.

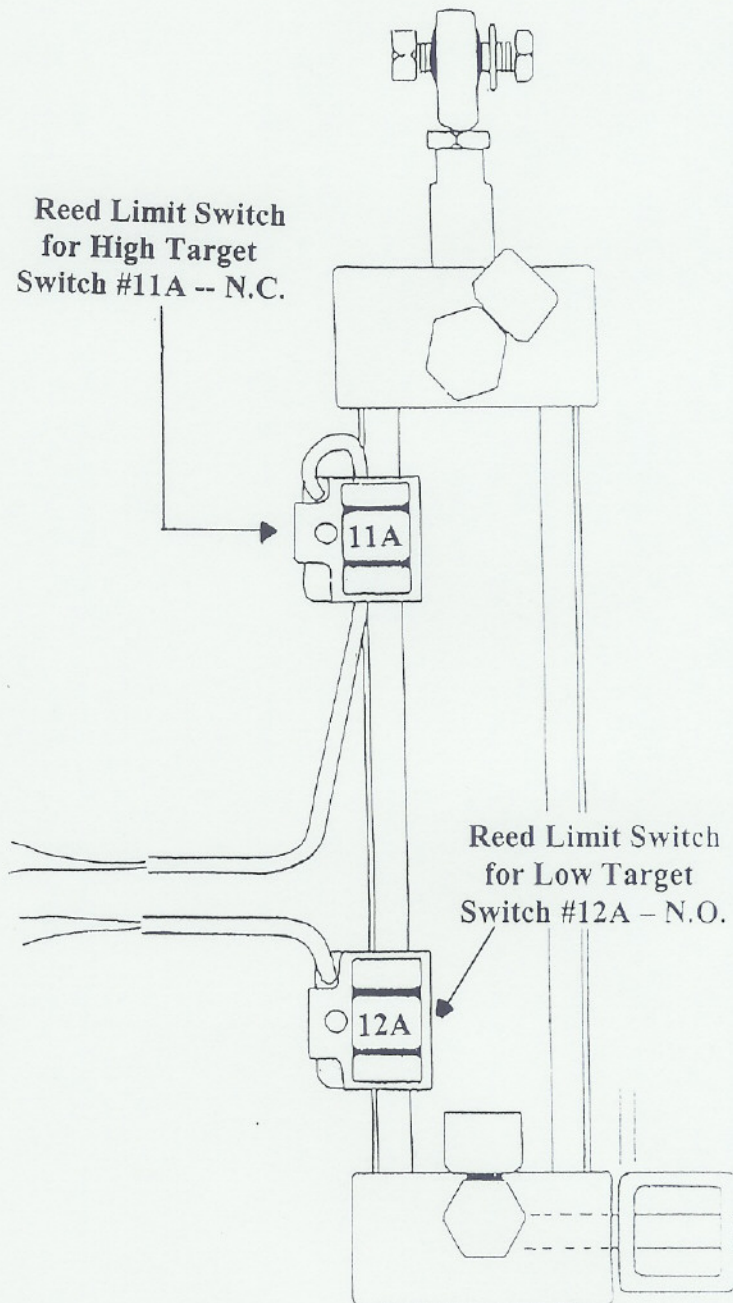
(Diagram 27)



Up To Serial #2804



(Diagram 51)



(Diagram 52)

TURNING THE PAT-TRAP® MACHINE "ON"

1. Push the Pump Motor toggle switch UP to the "ON" position. See Diagram 11

IMPORTANT: Turn the motor switch on *first* so that the hydraulic system is pressurized to prevent any air from entering the system. Allow the pump to warm up the hydraulic oil *before* operating the machine. In warm weather this will not matter. Cold temperatures may cause the throw arm to cycle repeatedly if the hydraulic oil is not warm. Please refer to the section: Cold Weather Adjustment Temperature/Release Time.

2. Push the On/Off/Release toggle switch UP to the "ON" position.

TURNING THE PAT-TRAP® MACHINE OFF

1. Standing outside, and to the side of the trap house, push the On/Off/Release toggle switch all the way DOWN to release and let go. The trap will throw the target and not cock the spring.
2. Push the Pump Motor toggle switch DOWN to the Off position.

LOADING THE PAT-TRAP® MACHINE

The Pat-Trap® machine holds four (4) full cases of clay targets.

NEVER attempt to load the clay targets without first releasing the trap machine.

IMPORTANT: NEVER STAND IN FRONT OF A TRAP MACHINE. THE TRAP MACHINE MUST BE TURNED OFF AND THE SPRING RELEASED BEFORE ENTERING THE TRAP HOUSE. NEVER ATTEMPT TO MAKE ANY ADJUSTMENT WHEN THE THROW ARM IS COCKED.

(Diagram 11)

