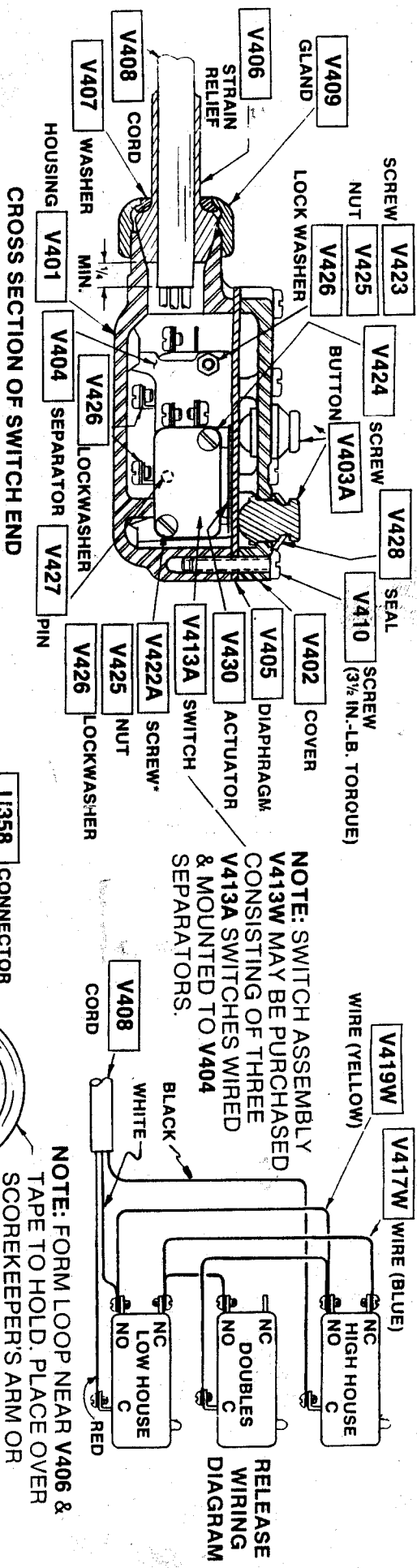


—WESTERN V400 SKEET RELEASE—

DANGER—AVOID INJURY! MAKE SURE ELECTRICAL POWER IS DISCONNECTED AND TRAPS ARE UNCOCKED BEFORE ATTEMPTING TO INSTALL OR SERVICE. INSPECT FREQUENTLY AND REPLACE DAMAGED PARTS.



CROSS SECTION OF SWITCH END

CONVERSION OF OLDER TRAPS:

DISCONNECT RECEPTACLE ONE WIRE AT A TIME AND REPLACE EACH IN TURN WITH V429 ADAPTER WIRE OF SAME COLOR. (IF OLD RECEPTACLE HAS GREEN WIRE, REPLACE WITH RED ADAPTER WIRE.) CHECK WIRING WITH DIAGRAM FURNISHED WITH TRAP.

WRAP ALL WIRE NUTS WITH AT LEAST TWO LAYERS OF PVC ELECTRICAL TAPE.

WHEN REPLACING OLDER ZIW RELEASE UNITS (METAL-TWO SWITCH) WRITE PRODUCT SERVICE DEPT. FOR NECESSARY TRAP INTERNAL CHANGE INSTRUCTIONS.

CONNECT WHITE WIRE TO CENTER POST, RED TO WIDE BLADE, BLACK TO NARROW.

WARNING

ELECTRICAL INSTALLATION MUST BE IN ACCORDANCE WITH NATIONAL ELECTRICAL CODE AND APPLICABLE LOCAL CODES!

TIGHTEN CORD GRIPS ON X249, U358, V409 & V411 TO PERMIT 35LB. PULL WITHOUT SLIPPAGE. DO NOT OVERTIGHTEN OR DAMAGE MAY RESULT.

*SINGLE 1 1/2" LONG SCREW & SPACER OF EARLIER MODEL HAS BEEN REPLACED WITH TWO 5/8" LONG SCREWS, NUTS & LOCKWASHERS.

Quality Replacement Parts, Inc.
9099 Bank St, Ste B
Valley View, OH 44125
1-800-742-0425