

Owners Manual



Model 800 Skeet Set

Please read **Before** operating machine



Read and follow all Safety Guidelines prior to operating machine

Table of Contents

1.	Congratulations	Pg. 3
2.	Safety Guidelines	Pg. 4
3.	Unpacking and setting up	Pg. 5
4.	Electronics	Pg. 6
5.	Shooting height / adjusting	Pg. 7
6.	Windage / adjusting	Pg. 8
7.	Pinchroller / adjust and Service	Pg. 9
8.	Sensor Trip / adjusting	Pg. 10,11
9.	Lift Plate	Pg. 12,13
10.	Mainspring / procedure for changing	Pg. 14,15
11.	Maintenance	Pg. 16
12.	Closing	Pg. 17
13.	Warranty	Pg. 18
14.	Registration	Pg. 19

**Congratulations on the purchase of
your new**

Superior Traps

Model 800

Skeet Set

These machines have been designed and built to give many years of trouble free service.

As with any machine with strong springs and moving parts, there are certain risks involved in the operation of this machine.

Always keep **Safety** your **First priority**.

Failure to follow safety, operation and maintenance guidelines could cause severe injury or death.

Safety Guidelines

Failure to follow these instructions could cause serious injury or death.

- 1. Never stand in front of machine.**
2. Turn off Motor switch, press Halfcock button (**this will release arm and target**) and turn off Main power switch before loading or adjusting machine.
3. Disconnect power before working on the machine.
4. Do not operate while standing in water. Use a cover when exposed to rain.
5. Do not use this machine if it is not in good working order.
6. Keep all hands, fingers and other body parts away from the moving parts of this machine.
7. Only properly trained personnel should operate this machine.
8. Eye protection should be worn by anyone loading, operating or servicing this machine.
9. Fill magazine evenly, with targets that are not cracked or broken. **Stand at rear of machine when loading.**
- 10. Never leave the machine unattended without first clearing machine (Halfcock) and shutting off power.**

Warning:

Do Not Stand In Front Of Machine At Any Time

Skeet Set Start -Up Procedure:

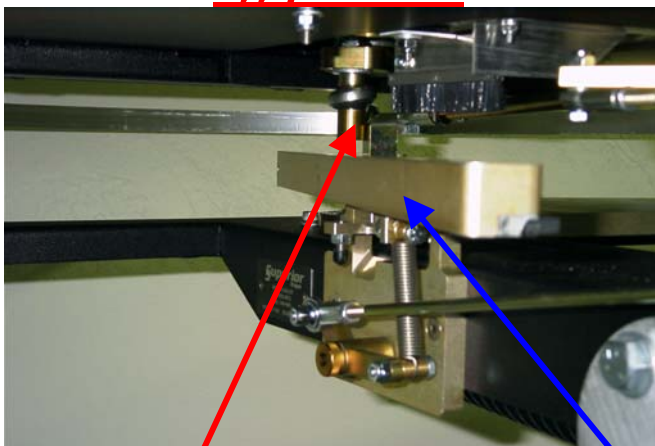
Make sure switches are in the off position.
Attach battery, to battery cable (Red to positive, Black to negative)
Or plug into 110volt power source.
Turn on **Main power** switch.
Turn on **Motor** switch.
After making sure everyone is clear of the machine and the area in front of machine is clear, press the release button.
Note: It is necessary to press the release button to start the machine. This is normal.

Power-Down Procedure:

Turn off the **Motor** switch.
Press the, **Half cock, Jog button**, this will release the throwing arm and throw a target.
Turn off the **Main Power** switch.



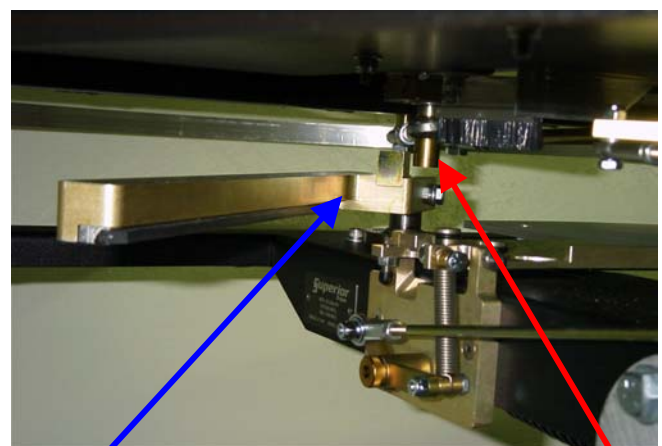
The machine is in a safe condition only when the cocking bolt is in front of the throwing arm and the motor and power switches are in the off position.



Cocking Bolt

Throwing Arm

Unsafe



Cocking Bolt

Safe

Superior Electronics

The 110 Volt AC machines use a DC drive board to control the motor. After turning the main and motor switches on, it is necessary to press the release button to start the machine. This is normal.

The drive board has numerous adjustments on it, none of which should be changed by the customer.

All machines are live fire tested prior to leaving the factory. If you should experience a problem we will be glad to fix it.

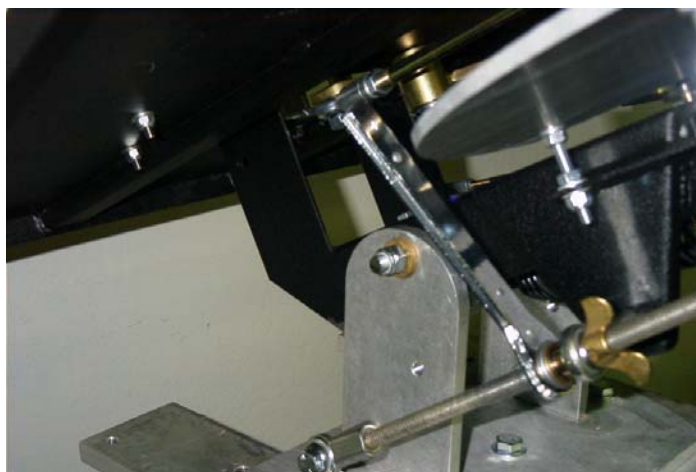
ANY ATTEMPT, BY THE CUSTOMER, TO ADJUST ANYTHING INSIDE THE ELECTRICAL BOX WILL VOID THE WARRANTY.

Adjusting Shooting Height

To adjust the shooting height, simply raise or lower the front of the machine. This is done by loosening the wing nut/locknut and using the attached ratchet wrench. After adjusting, retighten the wing nut.



Leave the wrench in this position when finished.



DO NOT leave wrench in this position as the arm will hit it when the machine is fired!

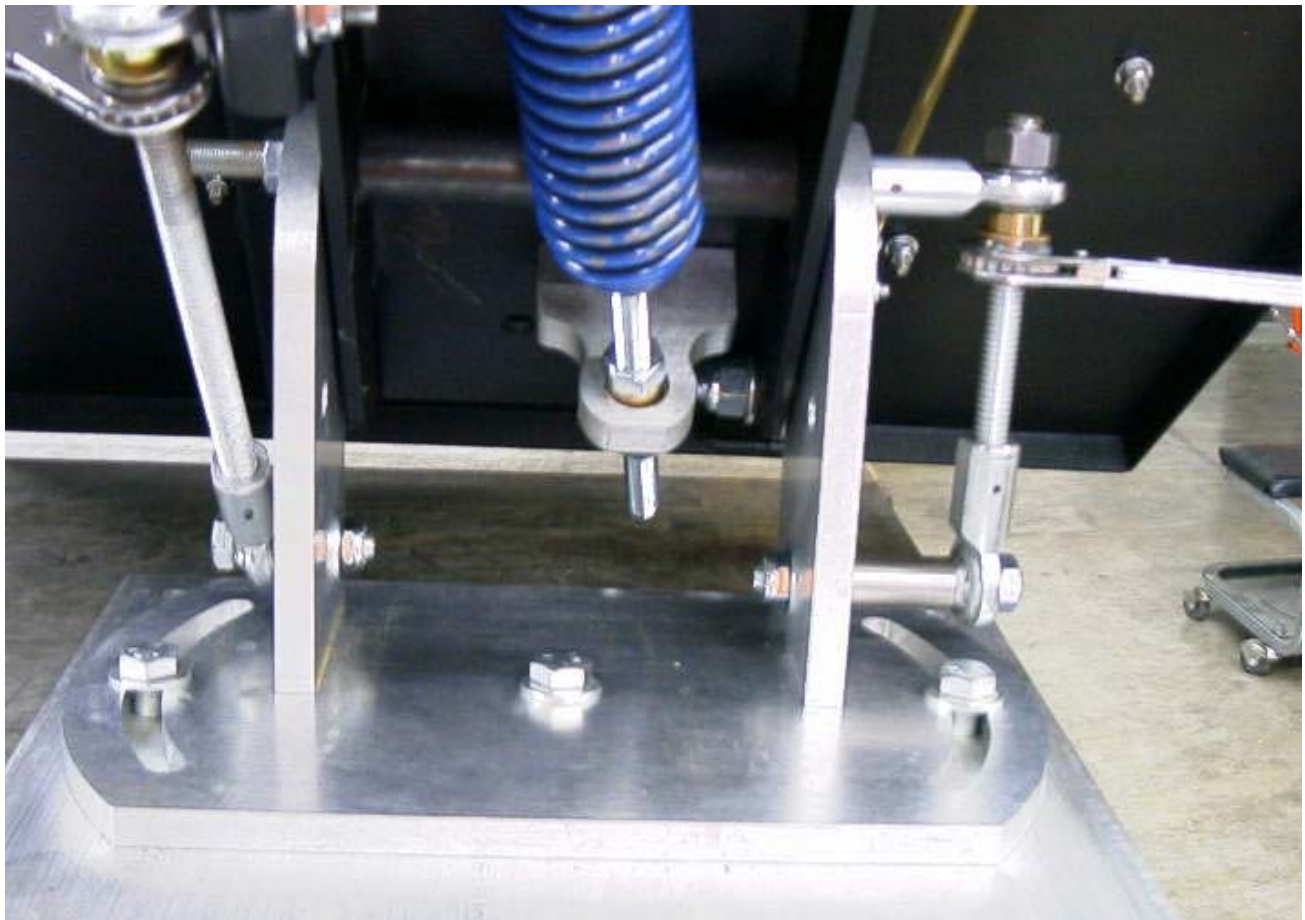
Adjusting Windage

The Superior Traps Skeet can be tilted to adjust for windage.

To adjust, loosen $\frac{3}{4}$ " nut on opposite side of frame. Loosen the jam nut on the windage adjustment, then raise or lower (using the attached wrench) the side of the machine with the adjustment until you get a level target presentation.

Tighten $\frac{3}{4}$ " nut on opposite side of frame (axle) after setting. Hold spherical rod end while tightening nut to keep perpendicular to acme threaded rod.

After adjusting, tighten the jam nut on the windage adjustment.



Pinchroller Adjustment

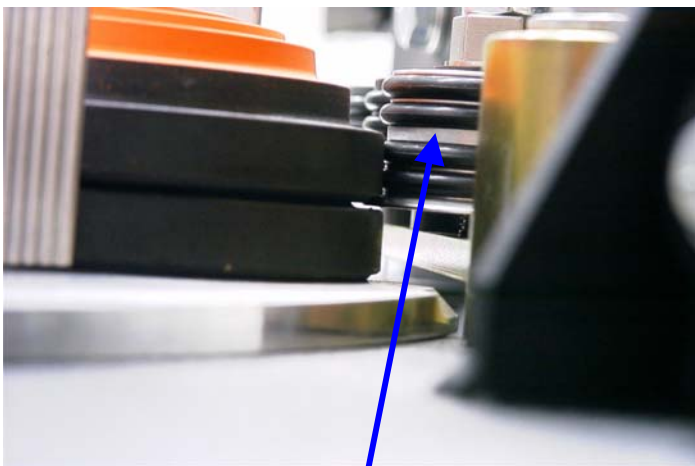
Proper Pinchroller adjustment is critical to proper machine performance.

Your machine has been adjusted and test fired at our factory.

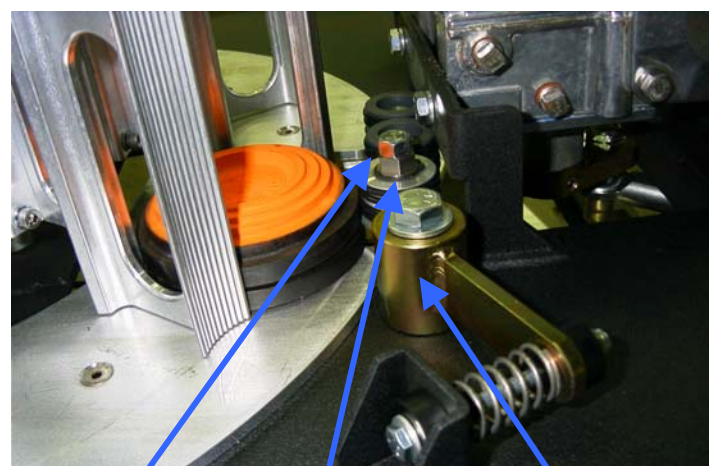
Prior to making any pinchroller adjustments make sure that all pinchrollers are rotating freely. Make sure the Splitter Roller is lubricated. We recommend and use LPS Greaseless lubricant #1.

The only adjustment that may be necessary is the height of the splitter roller. This is due to the fact that some manufacturers clay targets are slightly taller than others. The object of the splitter roller is to separate targets that stick together due to moisture, paint, etc. It is important that the splitter be set in such a manner that it slightly lifts the targets above it without cutting into the targets above or below. To adjust, hold the 5/8" arbor while loosening the 9/16" jam nut, turn arbor up or down to properly position splitter, tighten 9/16" jam nut while holding 5/8" arbor.

Loosening or tightening the nut on the 1/4-20 bolt on the pinchroller spring will not change the spring pressure on the pinchroller. This adjustment only affects the position of the pinchroller, not the pressure.



Splitter Roller



9/16 Jam nut

5/8 Arbor

Pinchroller Assy

Sensor trip

Adjustment Instructions

The SUPERIOR TRAPS Skeet uses a sensor and sensor trip mounted on top of the gearbox to adjust the position in which the throwing arm stops when fully cocked.

Setting the Sensor Trip involves working around the Throwing Arm; **ALWAYS** make sure you keep **SAFETY** your **FIRST PRIORITY**. **NEVER** stand in front of the machine while making any adjustments.

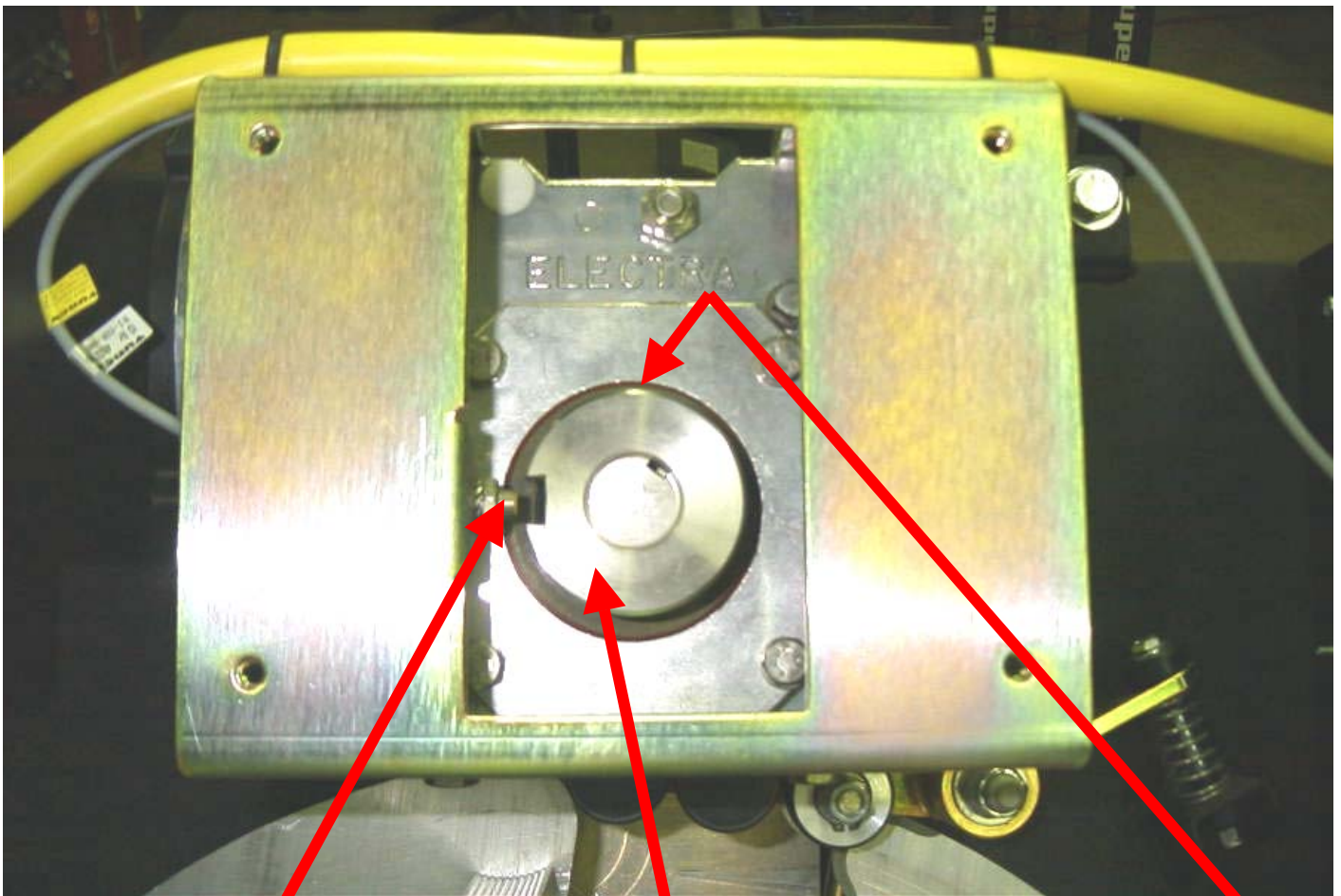
Any time adjustments are made, make sure the machine is in Halfcock position and the Main Power and Motor Power switches are both in the off position.

If the Arm is stopping too soon, Halfcock the machine (**this will release arm and throw a target**) and turn off both the Main and the Motor switch. Loosen the Adjustment screw on the Sensor Trip (using a 1/8th inch Allen wrench) and rotate it clockwise (as viewed from above the machine). Move in increments of approximately 1/32 of an inch. Tighten Adjustment screw and retest.

If the Arm is stopping too late (or throwing thru), Halfcock the machine (**this will release arm and throw a target**) and turn off both the Main and the Motor switch. Loosen the Adjustment screw on the Sensor Trip (using a 1/8th inch Allen wrench) and rotate counterclockwise (as viewed from above the machine). Move in increments of approximately 1/32 of an inch. Tighten Adjustment screw and retest.

See photo on following page

This is the sensor and sensor trip as viewed from above the machine. The shaft turns counterclockwise.



Sensor

Sensor trip

Adjusting screw

Use 3/16 Allen wrench

Lift Plate

Experienced, Safety conscious personnel only should attempt this procedure, as it requires working around the throwing arm.

The photos on the following page will show you the proper adjustment for the lift plate while in both the full up and full down positions.

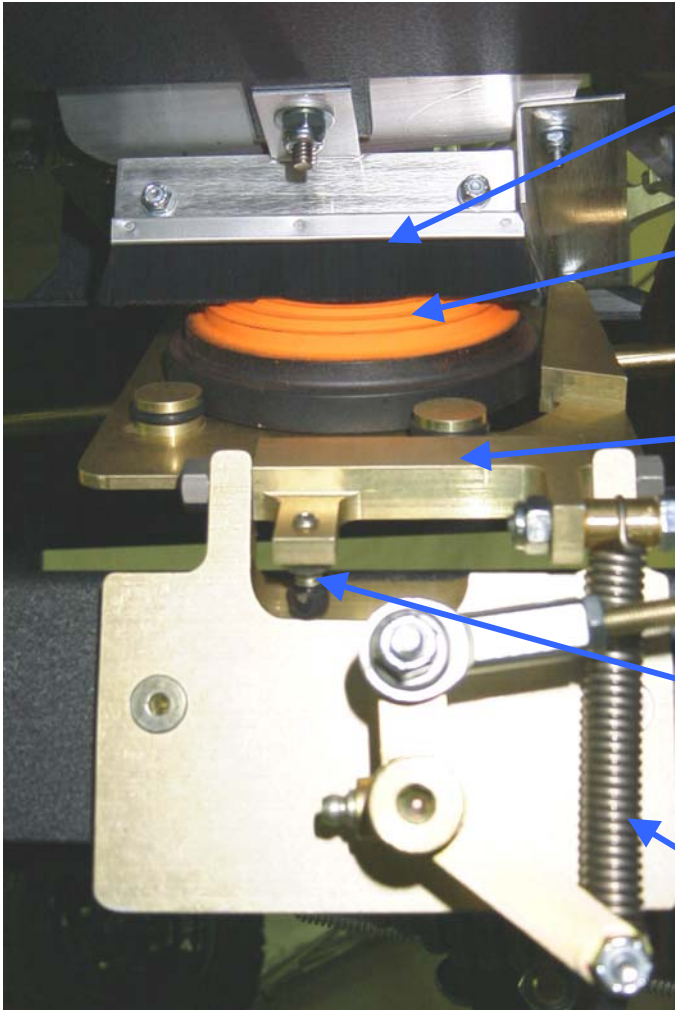
When in the full up position the target brush should rub the second land on the target as the target falls. This holds the target and helps keep it in the proper position on the lift plate. This is adjusted using the $\frac{1}{4}$ -20 setscrew (using a $\frac{1}{8}$ Hex key wrench) and jam nut on the end of the lift plate nearest the lift plate spring.

When in the full down position, the lift plate should be *slightly* ($\frac{1}{64}^{\text{th}}$ of an inch approx) higher than the throw plate. This insures that the target does not catch the throw plate while moving from the lift plate to the throw plate. This is adjusted using the $\frac{5}{16}$ -18 setscrew (using a $\frac{5}{32}$ Hex key wrench) and jam nut mounted in the frame under the lift plate.

Always remove spring before making adjustments to the lift plate.

Do not make adjustments with spring on and machine cocked.

See photos next page



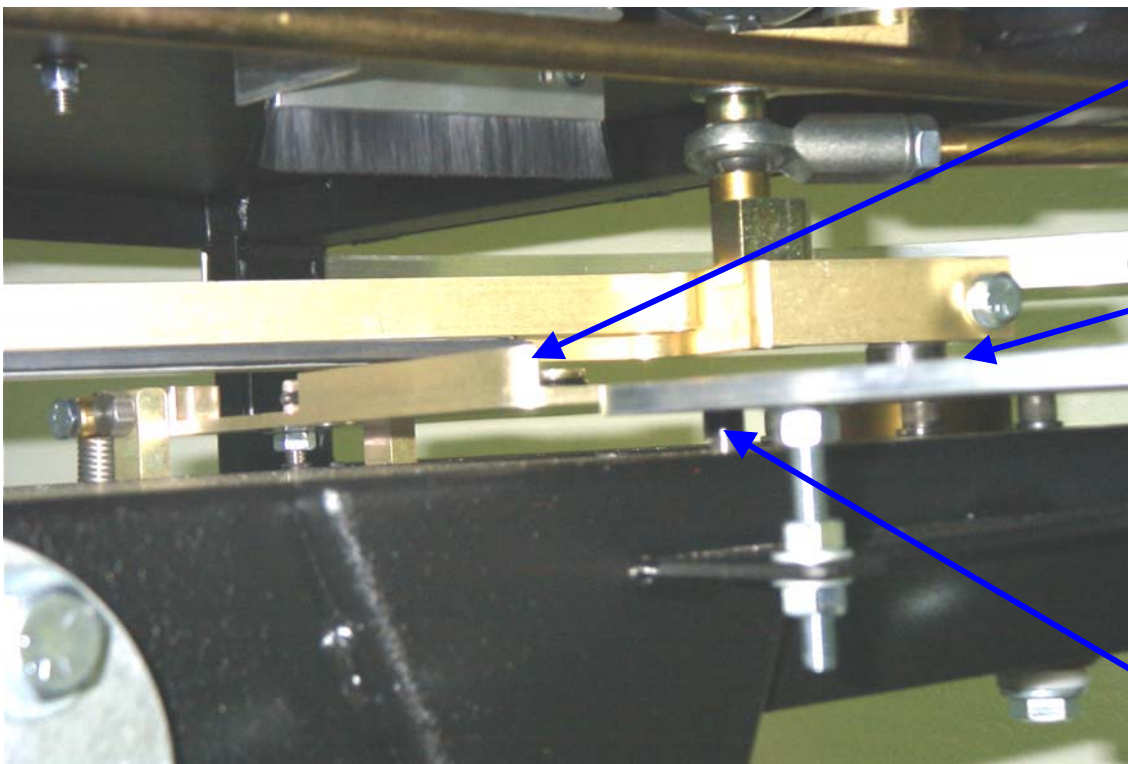
Target brush

2nd land on target

Lift plate

1/4-20 set screw and jam nut

Lift plate spring



Lift plate

Throw plate

**5/16-18
Setscrew**

Mainspring/Procedure for changing

Experienced, Safety conscious personnel only should attempt this procedure, as it requires manually manipulating the Throwing arm.

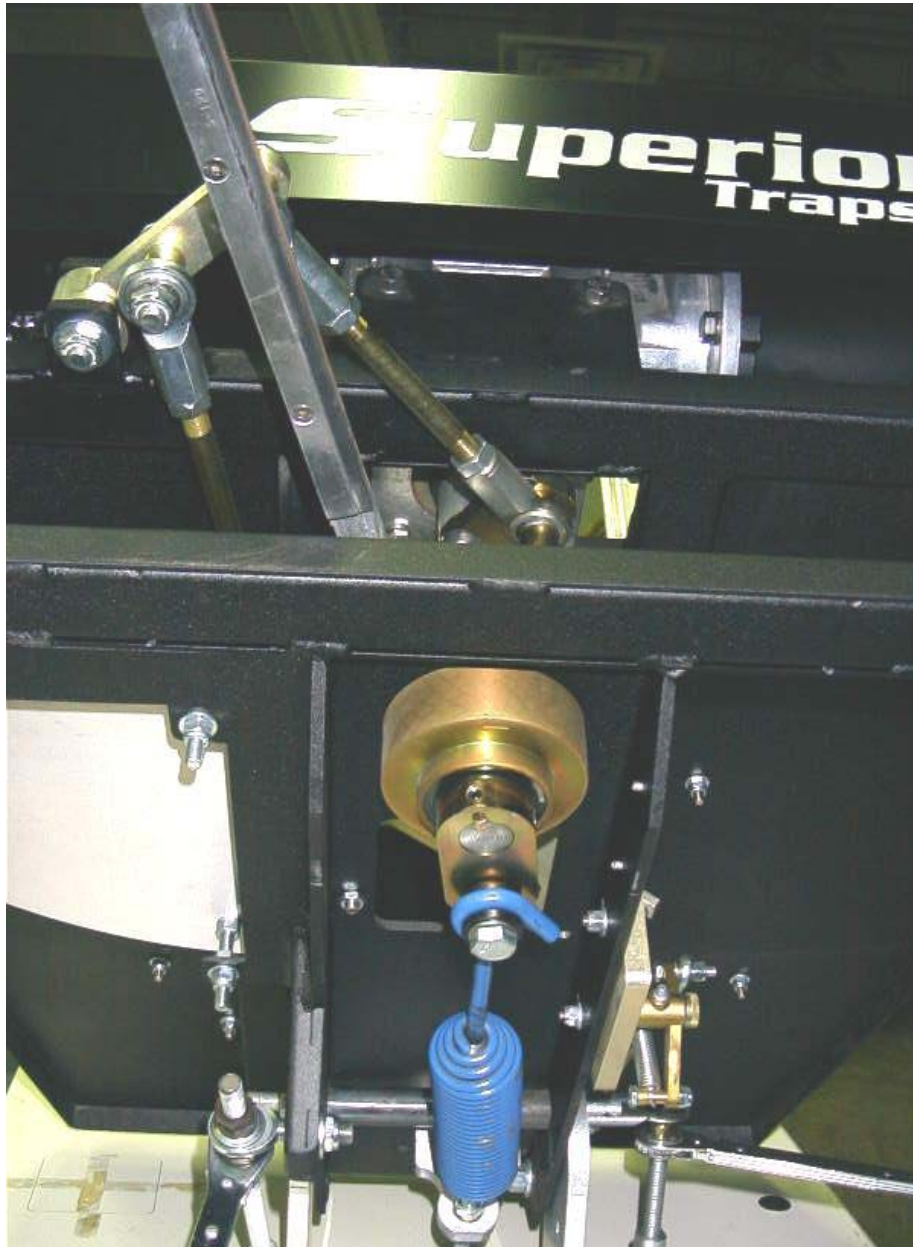
EMPTY ALL TARGETS FROM MAGAZINE

STAY CLEAR OF THROWING ARM AT ALL TIMES

1. Turn on both Main and Motor switches. This will bring the machine to the cocked and ready position.
2. Turn Motor switch to the off position.
3. Quickly tap the Halfcock button one time only. **This will release arm and throw target.**
4. Turn Main Power switch to the off position.
5. Manually push Throwing Arm (**using a 2x4 or other piece of wood**) around until the Spring Bolt touches the Cocking Bolt.
6. Turn on the Main Power.
7. Repeat steps 3 thru 6 until the arm moves with the cocking bolt when you press the Halfcock button.
8. Press the Halfcock button until Throwing Arm is pointing out the front of the machine. (**See picture, next page**). This is the Safe Spring change position.
9. Turn off Main power switch.
10. Disconnect power source.
11. Remove ½ - 13 nut from rear of spring, replace spring. Make sure you position the hook on the spring as shown in the picture on the following page (hook toward lift plate side of machine).

**DO NOT USE YOUR HAND TO
MANUALLY MOVE THROWING ARM!**

See photo next page



This is the position that the Throwing arm must be in to change springs.

The Arm must be pointing toward the front of machine with the spring at minimum tension.

Stay clear of Throwing Arm at all times.

Maintenance

With a little preventative maintenance your **Superior Traps Skeet** will give you many years of dependable service.

We recommend that you visually inspect the machine after every 5-10 magazine loads of targets.

You should look for any worn or damaged parts, such as, throwing arm rubbers, springs, o-rings, etc.

We also recommend weekly lubrication of all moving or rotating parts, such as pivot points, pinchrollers, linkage rod ends, magazine shaft, etc.

We recommend and use LPS Greaseless lubricant #1.

We understand that, by nature, trap machines get very dirty. Keep in mind, the cleaner you can keep your machine the better.

DO NOT use a machine with worn or damaged parts as this may cause a dangerous situation.

Thank You
For purchasing a
Superior Traps
Model 800 Skeet Set

We believe that you have purchased the finest Skeet machines made.

We do not anticipate you having any problems with your new machine and believe it will give you years of trouble free service.

In the event you should encounter a problem, or have a concern or suggestion, please feel free to contact any of our dealers or call us direct.

Superior Traps
(602) 548-2262
www.superiortraps.com

Superior Traps

17641 N. Black Canyon Hwy.

Suite C

Phoenix, AZ 85023

Ph.: (602) 548-2262

Fax: (602) 564-9622

E-Mail: customerservice@superiortraps.com

Limited Warranty

For ONE YEAR from the original date of purchase, SUPERIOR TRAPS will repair any defects in material or workmanship on PARTS ONLY. These defects must be determined by our examination.

The owner shall, at his own expense and risk, return the machine or defective parts to SUPERIOR TRAPS with all transportation charges to be prepaid.

All replacements will be FOB our factory. We shall not be liable for any drayage or labor costs.

THIS LIMITED WARRANTY IS IN ADDITION TO ANY STATUTORY WARRANTY.

We do not authorize any person or representative to make any other warranty, or assume for us any liability, other than those contained herein. Any agreement outside of, or contradictory to the foregoing, shall be void and of no effect. The free parts replacement portion of this warranty applies only to the SUPERIOR TRAPS clay target throwers owned and operated in North America.

The following are not considered defects and are not included in the warranty:

1. Damage resulting from improper line voltage.
2. Service required as a result of damage due to misuse.
3. Service required as a result of accidents, alteration, fire, flood or Acts of God.
4. Service required to regular wear parts such as service cords, throwing arms, switches, springs, etc.

The warranty registration must be returned to SUPERIOR TRAPS within 30 days of purchase or warranty is null and void.

THIS LIMITED WARRANTY ENDS AND OUR RESPONSIBILITY CEASES if any changes are made to the machine, if the electronics are tampered with in any way, if the serial number is mutilated, altered or removed, or if any parts or devices not manufactured or distributed by SUPERIOR TRAPS are added to the working mechanism of the machine.

Limited Warranty
Rev. 6/00

Superior Traps

17641 N. Black Canyon Hwy.

Suite C

Phoenix, AZ 85023

Ph.: (602) 548-2262

Fax: (602) 564-9622

E-Mail: customerservice@superiortraps.com

Limited Warranty Registration Form

Purchaser's Name:		Phone:
Address:		
City:	State:	Zip Code:
Purchased From (Company Name):		
Address:		
City:	State:	Zip Code:
Date of Purchase:	Packaged by:	
Product Part Number:	Product Description:	
Make/Model/Year		
Installer's Name		
Date Installed:	Installed By: Owner _____ Dealer _____	

Enclose a copy of dated sales receipt and installation work order (if installed by a dealer); sign below and mail to Superior Traps within 30 days of purchase.

I, the undersigned, am the original end-user of the above product. I have read and fully understand the terms and conditions of the limited warranty provided by Superior Traps on this product. In addition, I am registering this product under the terms and conditions stated in the Superior Traps Limited Warranty.

Purchaser Signature: _____ Date: _____

Limited Warranty Reg.
Rev. 6/00