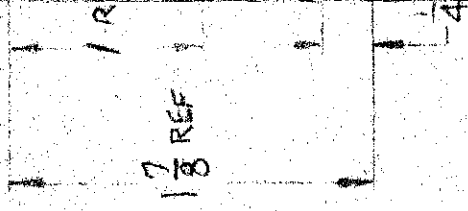
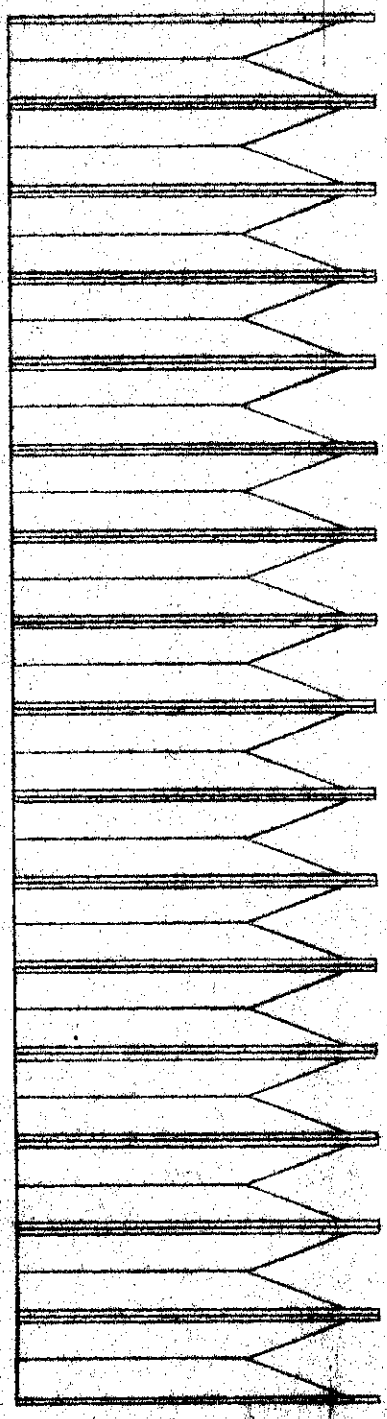
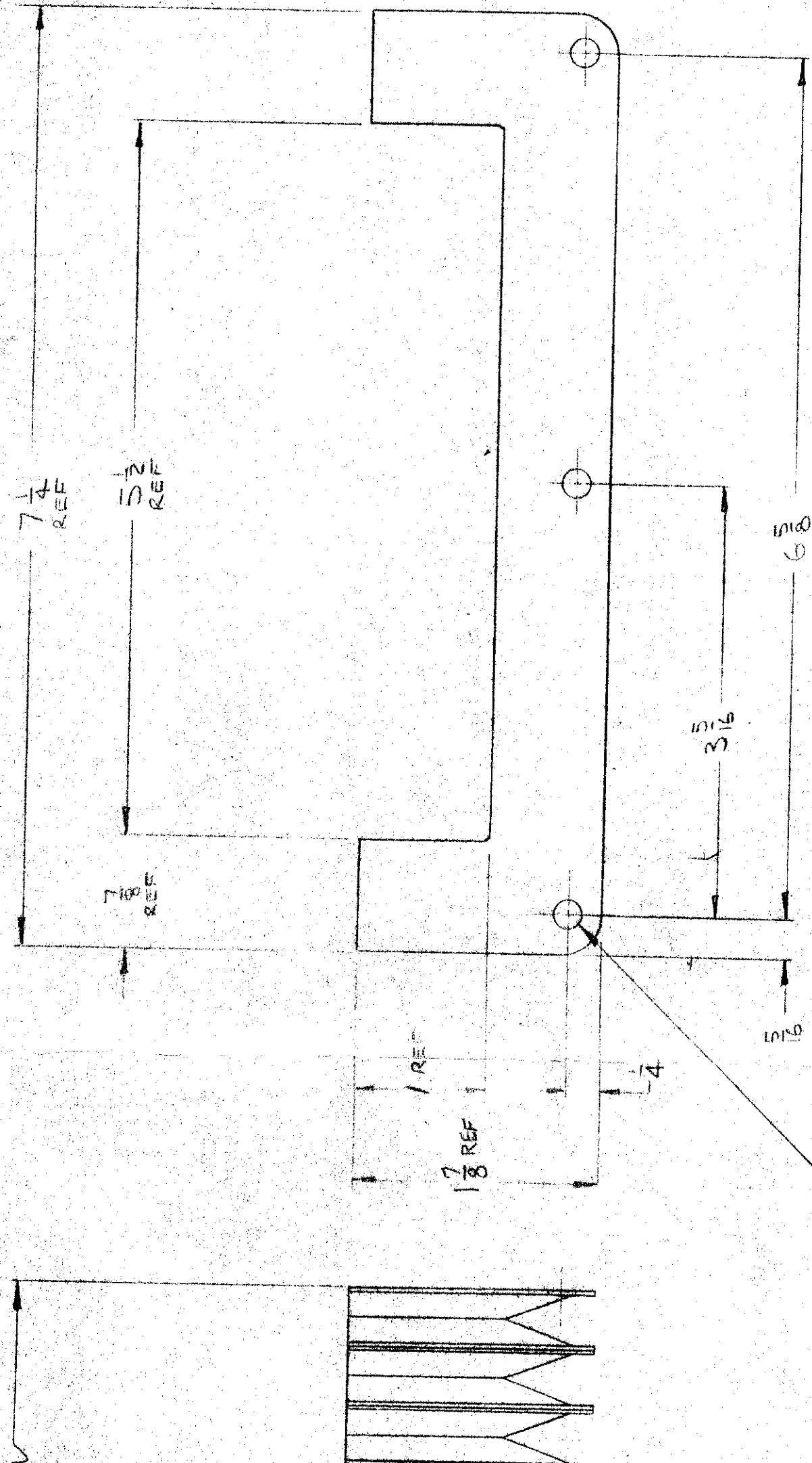


12 MAX. OPEN REF.
1/2 MIN. CLOSED REF.

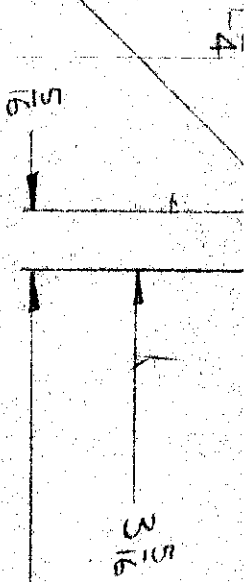


7/8 DIA. - 3 HOLES THRU
BOTH END FLANGES



3 HOLES THRU
END FLANGES

$\frac{7}{32}$ DIA. - 3 HOLES THRU
BOTH END FLANGES



NOTE :- MAKE FROM GORTITE PROTECTIVE COVER
 $5\frac{1}{2}$ WIDE INSIDE x $7\frac{1}{4}$ WIDE OUTSIDE x $\frac{7}{8}$ BELLOWS WIDTH
12 MAXIMUM x $\frac{1}{2}$ MINIMUM
1 HIGH INSIDE x $\frac{1}{8}$ HIGH OUTSIDE
MATERIAL .033 NEOPRENE/NYLON
STD FLANGES - MODIFIED AS SHOWN

