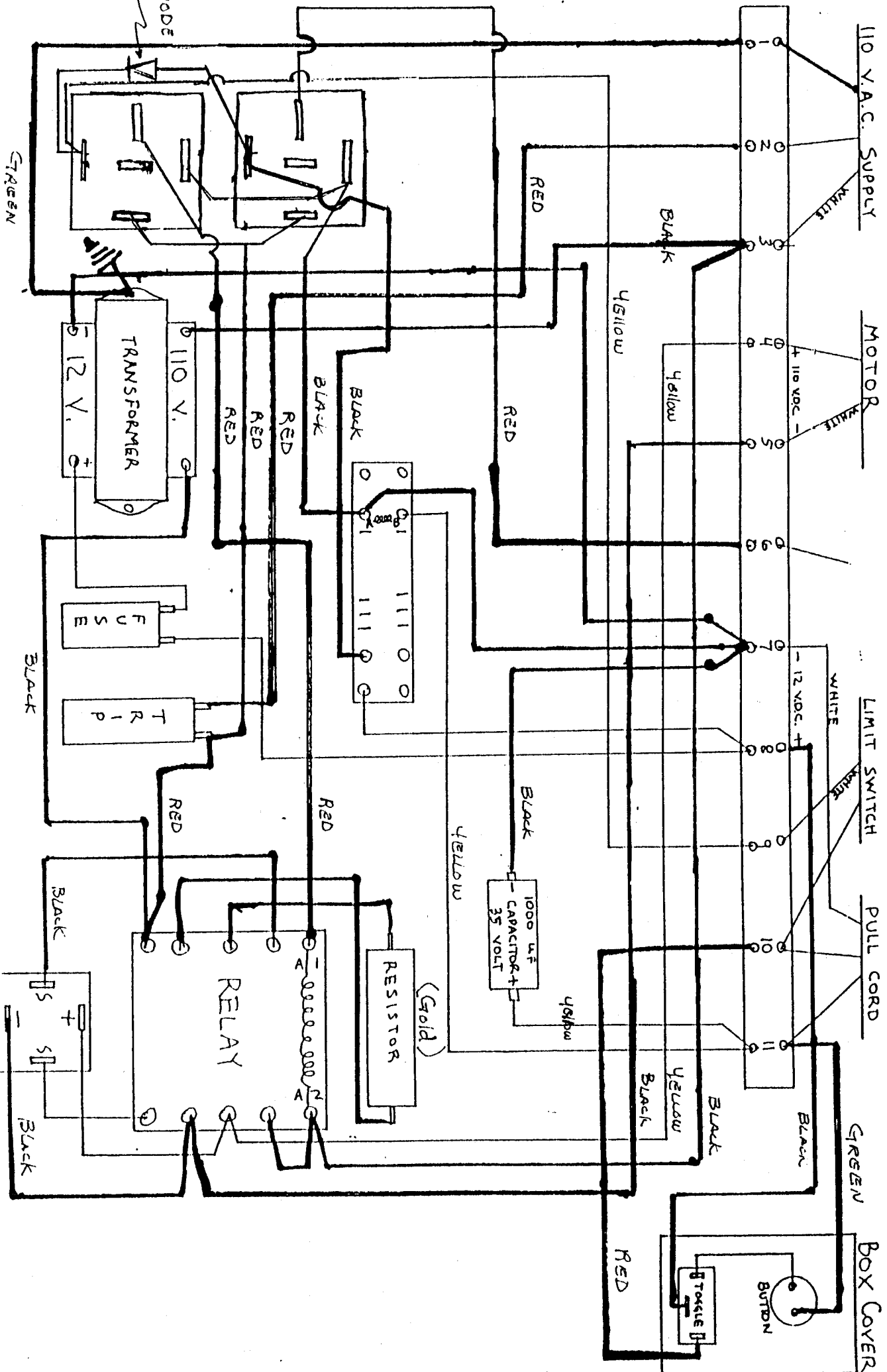
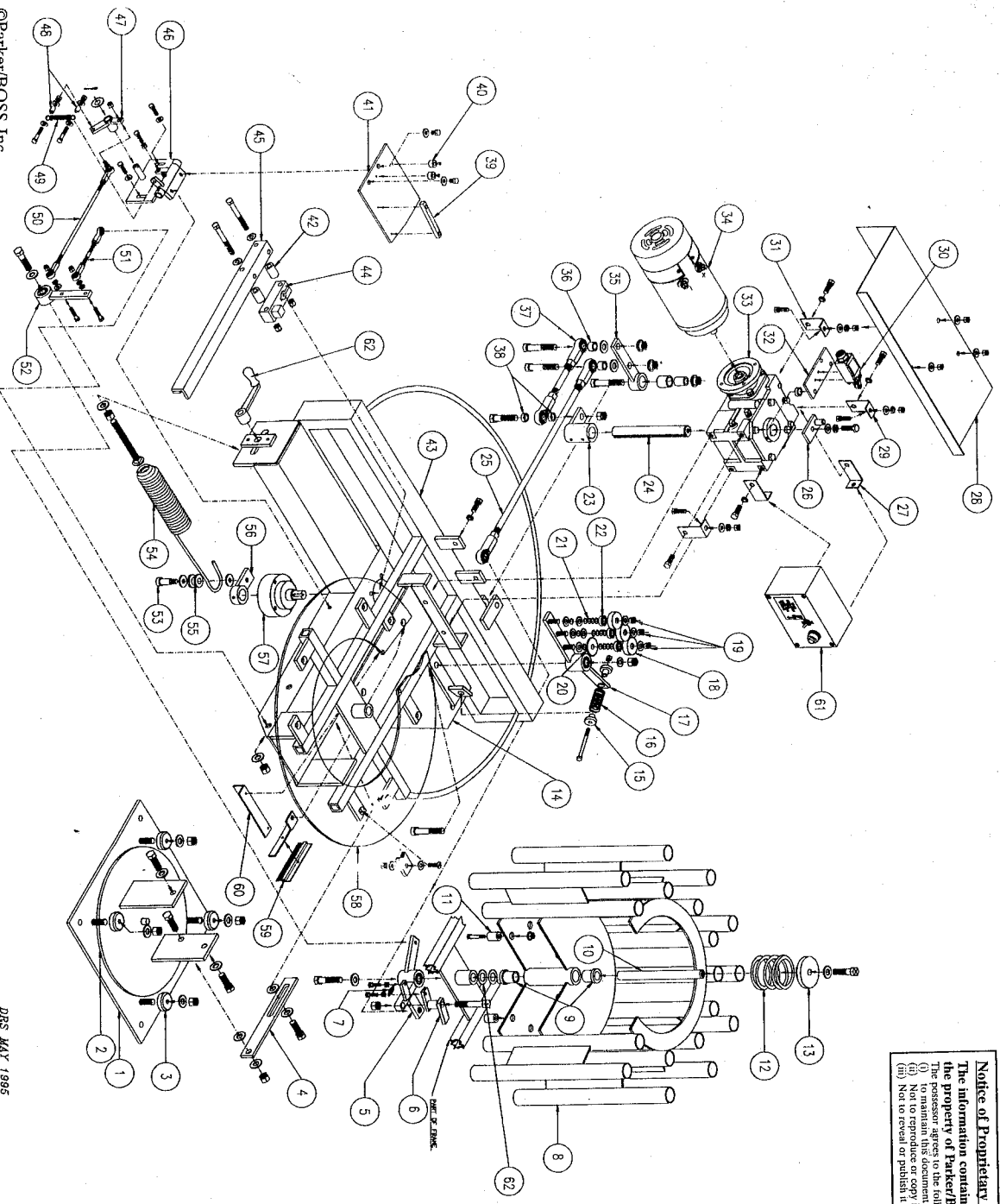


110 V SPORTER

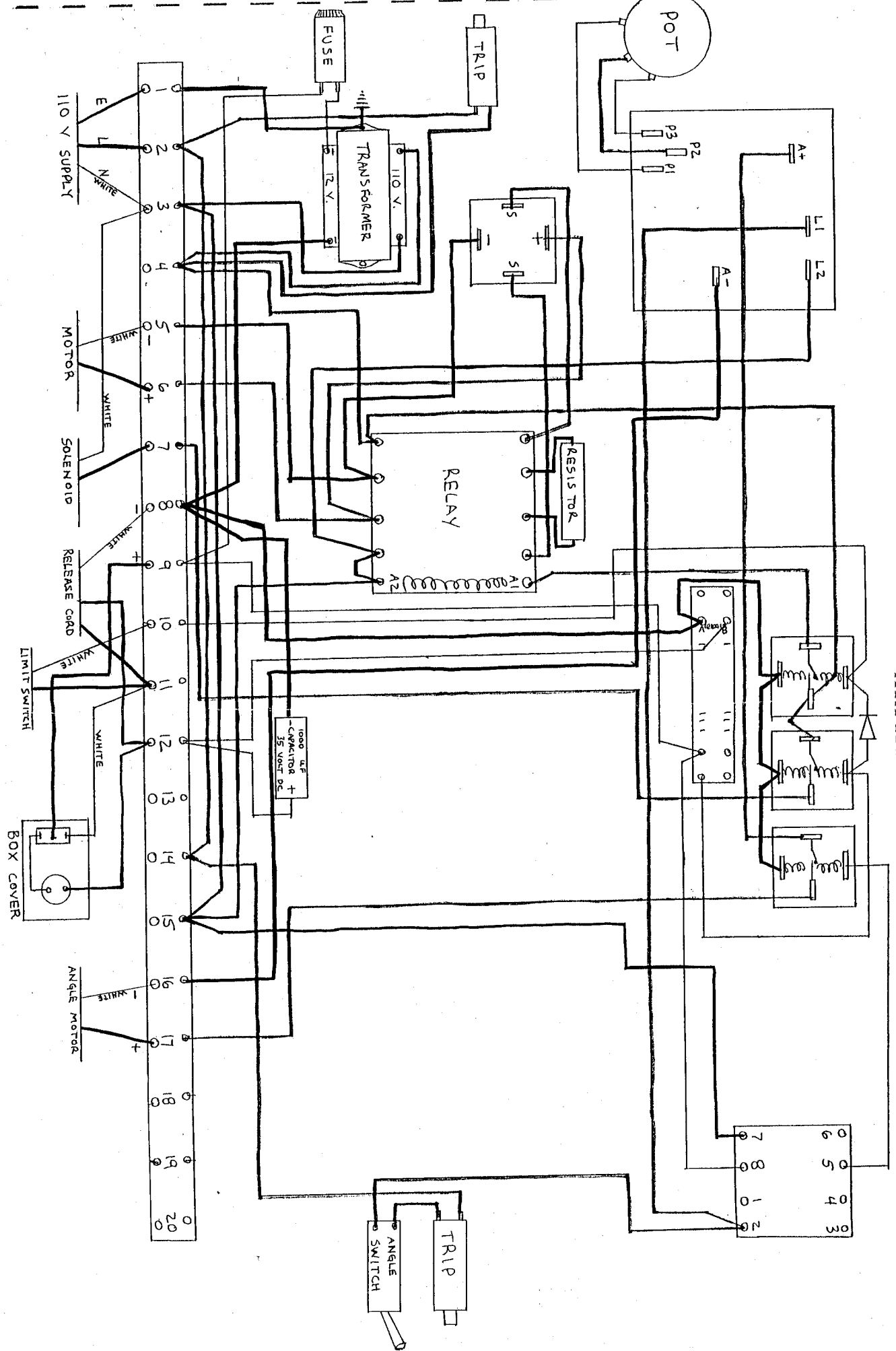


Sporter Model

Notice of Proprietary Property:
 The information contained herein is the property of Parker/BOSS, Inc. The possessor agrees to the following:
 (i) No reproduction or copy in any form.
 (ii) No transmission or publication in whole or part.



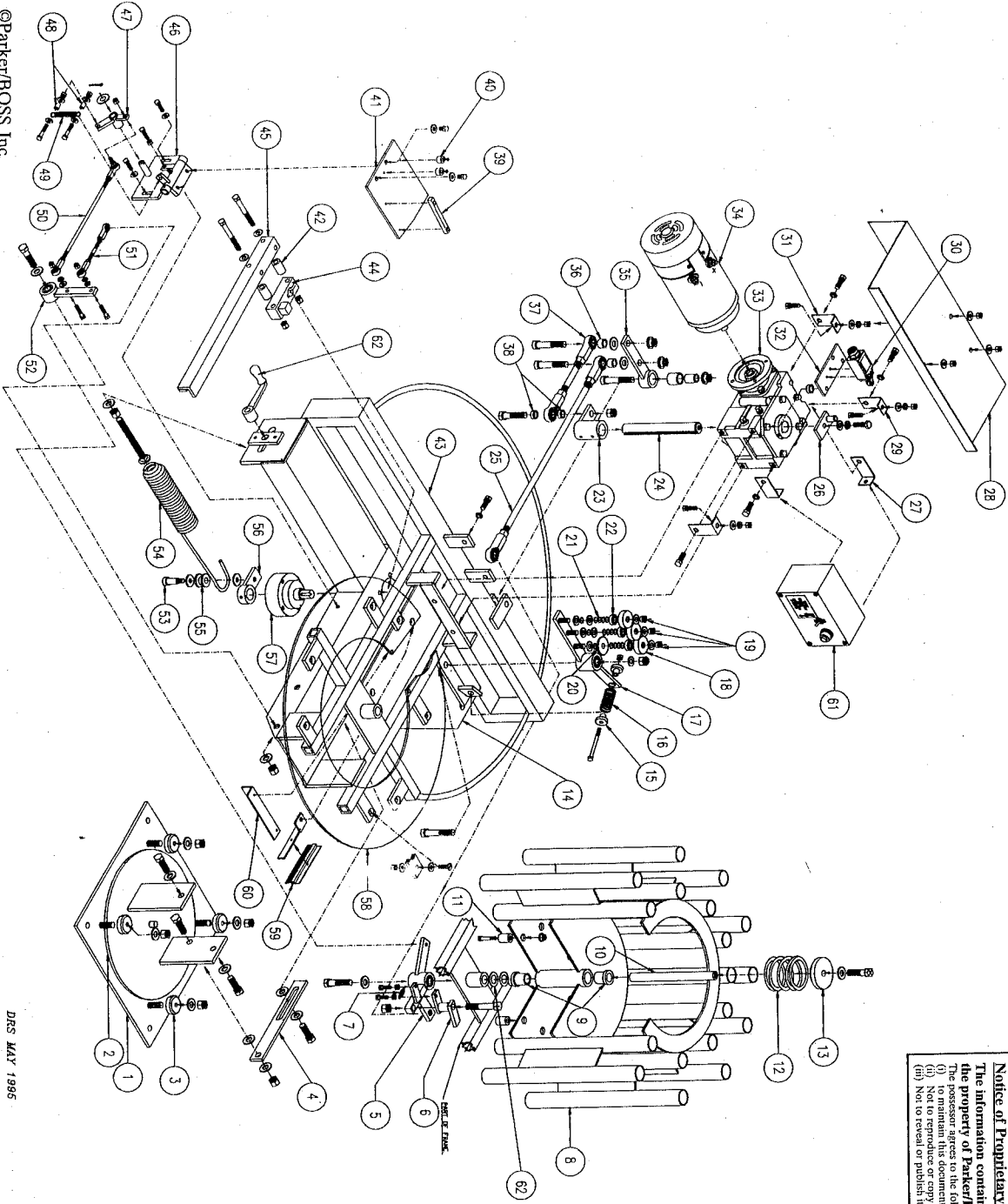
1	BASE PLATE
2	SWIVEL BASE PLATE
3	PLATE-HOLD DOWN WASHERS - 4 REQUIRED
4	HEIGHT ADJUSTER STRAP
5	INDEXING LEVER WELDMENT
6	INDEXING ZEE PIECE
7	INDEXING LEVER SPRING
8	MAGAZINE
9	MAGAZINE BUSHINGS - 2 REQUIRED
10	MAGAZINE SHAP
11	MAGAZINE INDEXING BUSHINGS - 12 REQUIRED
12	MAGAZINE PRESSURE SPRING
13	MAGAZINE PRESSURE SPRING BUSHING
14	THROW PLATE
15	PINCHROLL SPRING BUSHING--- 2 REQUIRED
16	PINCHROLLER SPRING
17	PINCHROLLER WELDMENT
18	PINCHROLLERS--- 3 REQUIRED
19	PINCHROLLER NUTS --- 3 REQUIRED
20	SPLITTER WASHER
21	PINCHROLLER SHIMS --- 12 REQUIRED
22	PINCHROLLER BEARINGS --- 3 REQUIRED
23	GEARBOX WELDMENT
24	GEARBOX SHAFT
25	INDEXING ROD-LONG
26	LIMIT-SWITCH WELDMENT
27	ELECTRICAL-BOX CLIPS
28	MOTOR AND GEARBOX COVER
29	MOTOR AND GEARBOX COVER CLIPS
30	LIMIT-SWITCH
31	MOTOR AND GEARBOX COVER CLIPS
32	LIMIT-SWITCH PLATE
33	GEARBOX
34	MOTOR
35	INDEX LINKAGE WELDMENT
36	INDEX LINKAGE SPACERS --- 2 REQUIRED
37	INDEX LINKAGE --- SHORT
38	INDEX LINKAGE SPACERS --- 2 REQUIRED
39	GUIDE BAR - LIFT PLATE
40	RUBBER STOPS - LIFT PLATE --- 2 REQUIRED
41	LIFT PLATE
42	THROWING ARM SPACERS --- 2 REQUIRED
43	FRAME
44	THROWING ARM CRANK
45	THROWING ARM
46	LIFT PLATE HINGE-WELDMENT
47	HINGE LEVER-WELDMENT
48	HINGE LEVER SPRING SPACERS --- 2 REQUIRED
49	HINGE LEVER SPRING
50	LIFT PLATE LINKAGE - LONG
51	LIFT PLATE LINKAGE - SHORT
52	LIFT PLATE WELDMENT
53	SPRAG WELDMENT BOLT
54	MAIN SPRING
55	MAIN SPRING BUSHING
56	MAIN SPRING SPRAG-WELDMENT
57	MAIN SPRING SPRAG
58	TARGET PLATE
59	TARGET BRUSH ASSEMBLY
60	TARGET STOP
61	ELECTRICAL BOX
62	SPRING BOLT CRANK
63	MAGAZINE SHIMS



AIA IKAT

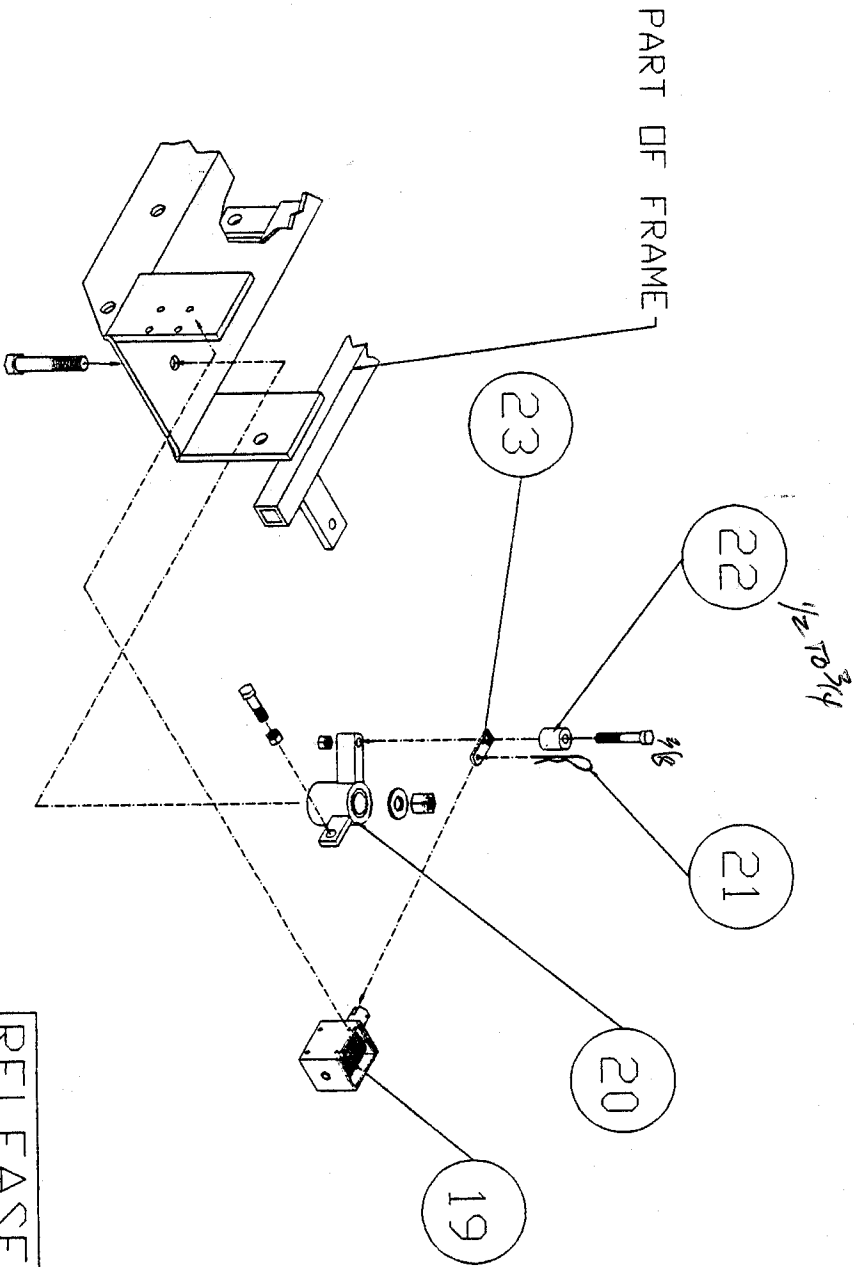
Sporter - ATA Trap - Skeet Model

Notice of Proprietary Property:
 The information contained herein is the property of Parker/BOSS, Inc. and is to be maintained in confidence. (a) Not to reproduce or copy it. (b) Not to reveal or publish it in whole or part.



1	BASE PLATE
2	SHIM PLATE
3	PLATE-HOLD DOWN WASHERS - 4 REQUIRED
4	HEIGHT ADJUSTER STRAP
5	INDEXING LEVER WELDMENT
6	INDEXING ZIE PIECE
7	INDEXING LEVER SPRING
8	MAGAZINE BUSHINGS - 2 REQUIRED
9	MAGAZINE SHIM
10	MAGAZINE INDEXING BUSHINGS - 12 REQUIRED
11	MAGAZINE PRESSURE SPRING
12	MAGAZINE PRESSURE SPRING BUSHING
13	THROW PLATE
14	PINCHROLLER SPRING BUSHING - 2 REQUIRED
15	PINCHROLLER SPRING
16	PINCHROLLER WELDMENT
17	PINCHROLLER NUTS - 3 REQUIRED
18	PINCHROLLER WASHER
19	PINCHROLLER SHIMS - 12 REQUIRED
20	PINCHROLLER BEARINGS - 3 REQUIRED
21	GEARBOX WELDMENT
22	GEARBOX WELDMENT
23	GEARBOX SHAFT
24	INDEXING ROD-LONG
25	LIMIT SWITCH WELDMENT
26	ELECTRICAL BOX CLIPS
27	MOTOR AND GEARBOX COVER CLIPS
28	MOTOR AND GEARBOX COVER CLIPS
29	LIMIT SWITCH
30	LIMIT SWITCH PLATE
31	GEARBOX MOTOR
32	INDEX LINKAGE WELDMENT
33	INDEX LINKAGE SPACERS - 2 REQUIRED
34	INDEX LINKAGE - SHORT
35	INDEX LINKAGE - SHORT
36	GUIDE BAR - LIFT PLATE
37	RUBBER STOPS - LIFT PLATE - 2 REQUIRED
38	LIFT PLATE
39	THROWING ARM SPACERS - 2 REQUIRED
40	THROWING ARM CRANK
41	THROWING ARM
42	LIFT PLATE HINGE WELDMENT
43	HINGE LEVER SPRING SPACERS - 2 REQUIRED
44	HINGE LEVER SPRING
45	LIFT PLATE LINKAGE - LONG
46	LIFT PLATE LINKAGE - SHORT
47	SPRING WELDMENT BOLT
48	MAIN SPRING
49	MAIN SPRING BUSHING
50	MAIN SPRING SPRAG WELDMENT
51	MAIN SPRING SPRAG
52	TARGET PLATE
53	TARGET BRUSH ASSEMBLY
54	TARGET STOP
55	ELECTRICAL BOX
56	SPRING BOLT CRANK
57	MAGAZINE SHIMS
58	
59	
60	
61	
62	

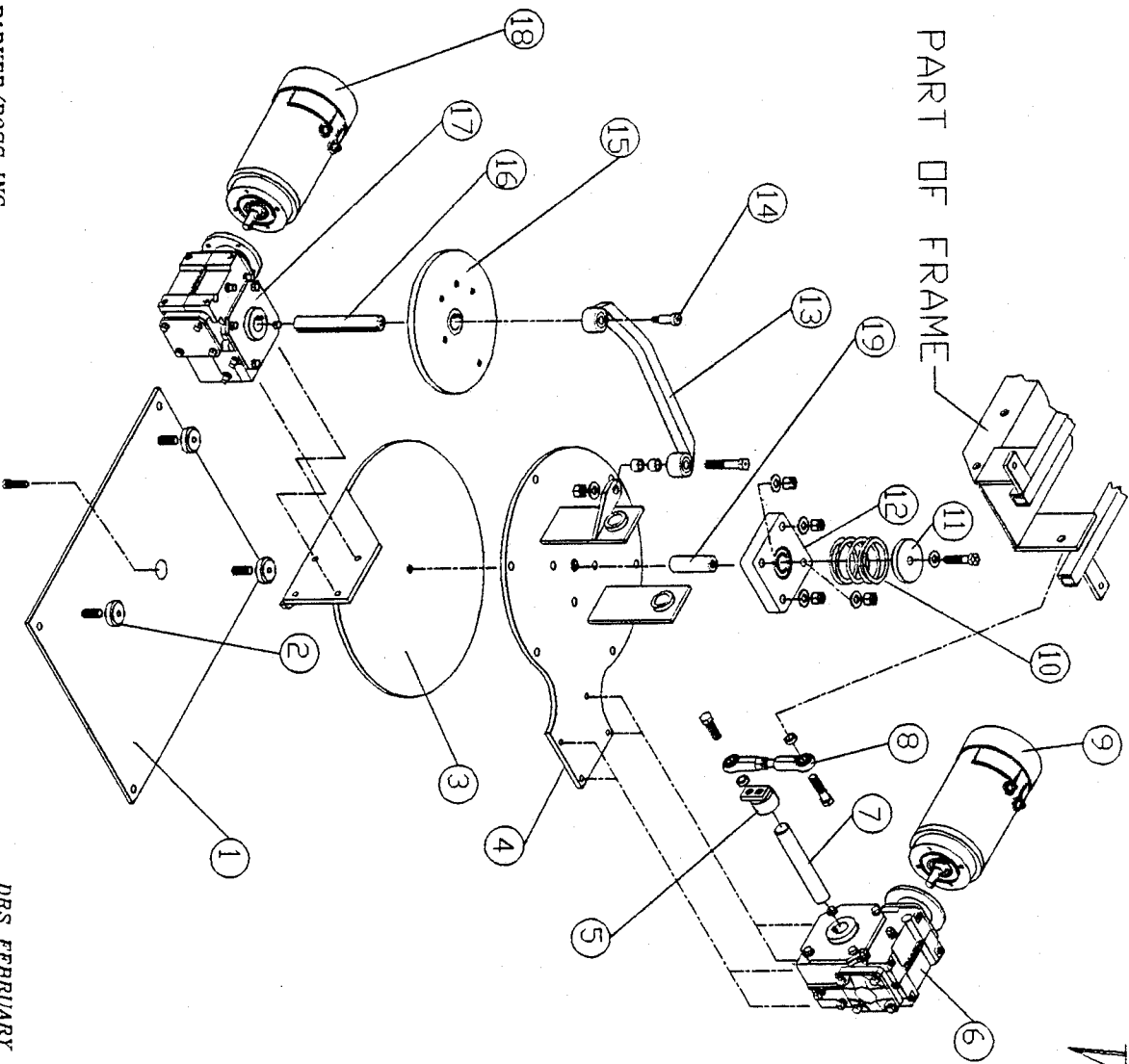
RELEASE MECHANISM



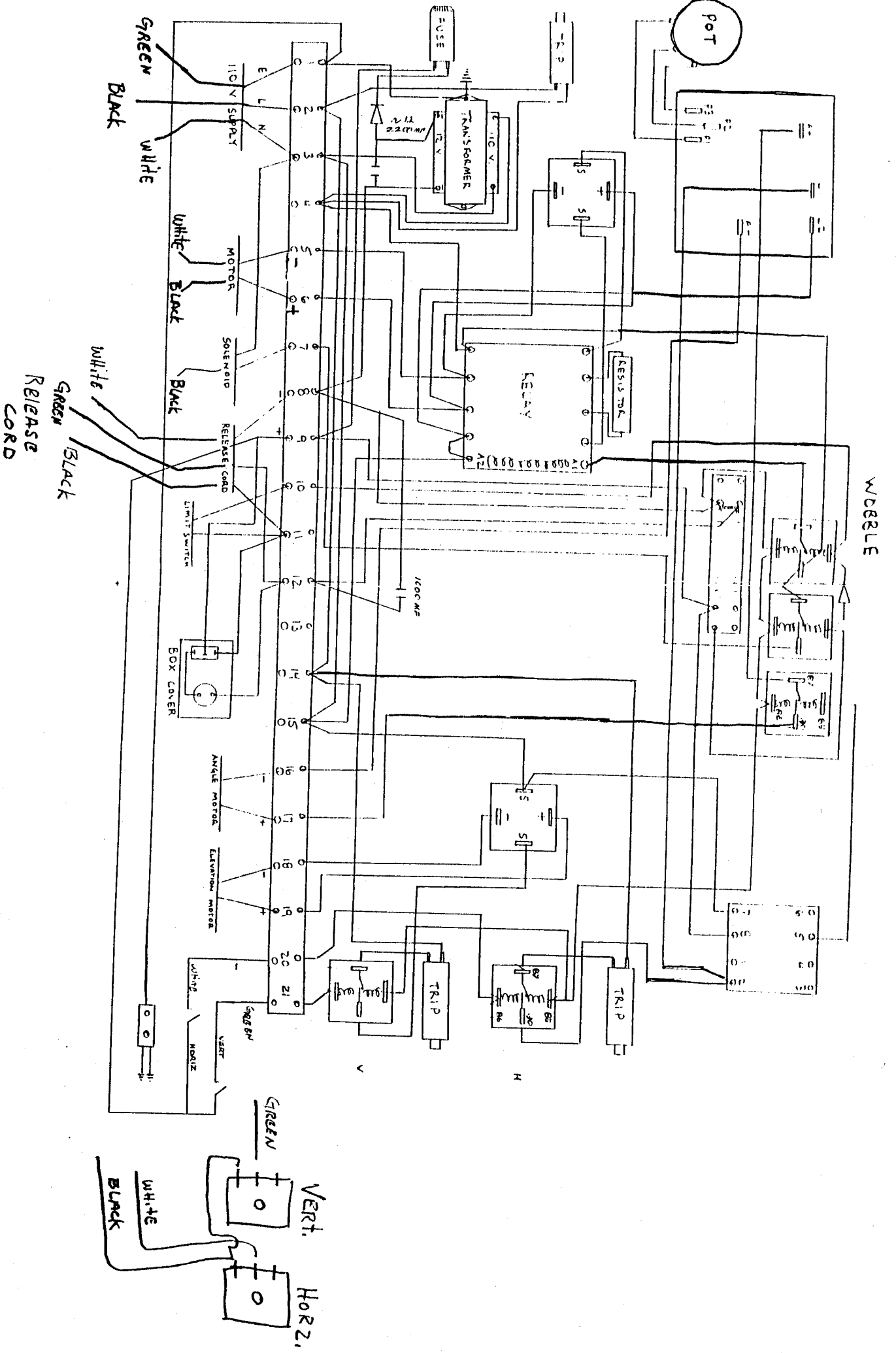
RELEASE MECHANISM	
23	SOLENOID LINK
22	RELEASE MECH. BUSHING
21	SOLENOID PIN
20	RELEASE MECHANISM
19	SOLENOID

WOBBLE BASE

PART OF FRAME

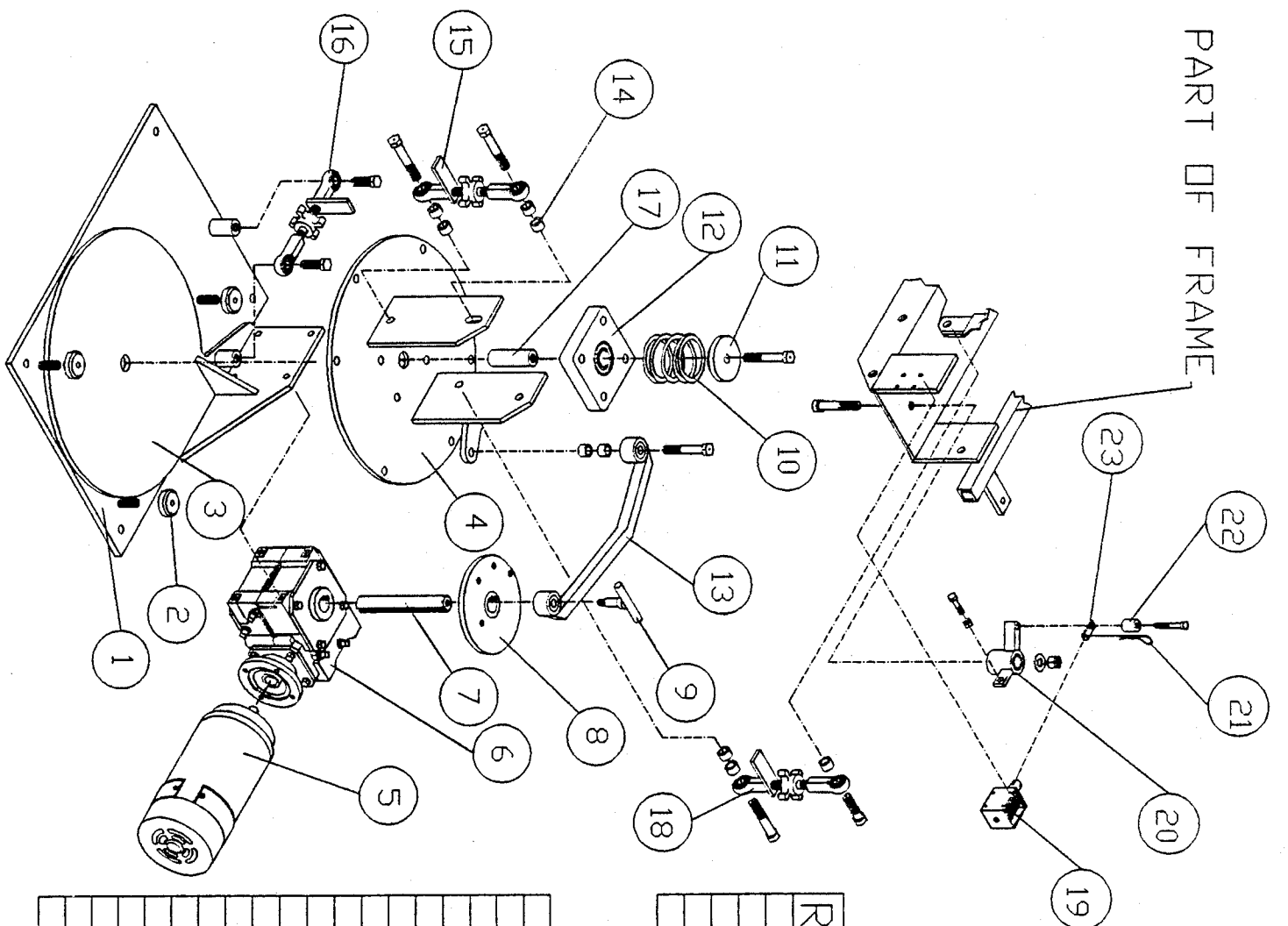


19	BUSHING
18	MOTOR -- OSCILLATING
17	GEARBOX-- OSCILLATING
16	OSCILLATING SHAFT
15	OSCILLATING DISC
14	OSCILLATING SHOULDER BOLT
13	OSCILLATING ARM
12	SUPPORT BEARING
11	BUSHING 3013
10	PRESSURE SPRING 3012
9	ELEV. MOTOR
8	ELEV. LINKAGE
7	ELEV. GEARBOX SHAFT
6	ELEV. GEARBOX
5	ELEV. COLLAR
4	BASE WELDMENT-WOBBLE
3	WOBBLE PLATE 6003
2	PLATE HOLD DOWN 3003
1	BASE PLATE 6001



PART OF FRAME

A77A BASE



RELEASE MECHANISM

23	SOLENOID LINK
22	RELEASE MECH. BUSHING
21	SOLENOID PIN
20	RELEASE MECHANISM
19	SOLENOID

18	ELEVATION ADJUSTER
17	BUSHING - BEARING BLOCK
16	WINDAGE ADJUSTER
15	CANT ADJUSTER
14	BUSHINGS
13	OSCILLATING ARM
12	SUPPORT BEARING
11	BUSHING 3013
10	PRESSURE SPRING 3012
9	OSCILLATING SET HANDLE
8	OSCILLATING DISC
7	OSCILLATING GEARBOX SHAFT
6	OSCILLATING GEARBOX
5	OSCILLATING MOTOR
4	BASE WELDMENT-WOBBLE
3	WOBBLE PLATE 6003
2	PLATE HOLD DOWN 3003
1	BASE PLATE 6001